

The Panthera D-SAD allows to treat obstructive sleep apnea and/or snoring.

- Smallest device
- Biocompatible material
- Hydrophobic
- Titration in 0.5-mm increments

Resists to bruxism

CAD/CAM

FDA 51 O(k) cleared for sleep apnea and snoring



Benefits of Treatment Using a Mandibular Advancement Device

- Non-invasive, reversible, and long-term treatment
- Excellent patient compliance because of its effectiveness and comfort
- Minimizes bulk in the mouth when sleeping thanks to its small size and custom fit
- Easy adjustment, titration, insertion, and removal, both for the dental practitioner and the patient



*Including shipping

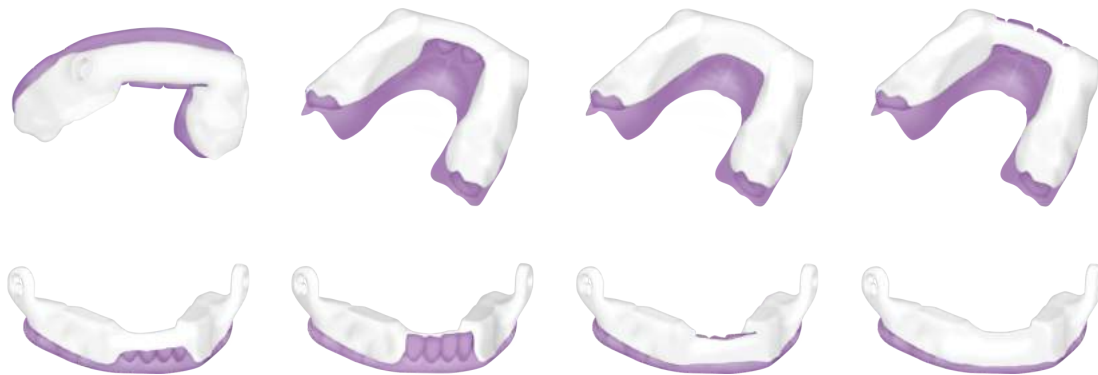
Plateau

In order to accommodate every patient, we offer a **wide range of plates** for tailored contact surfaces; from standard options to customized anterior pad. Since the D-SAD can be adapted for every possible situation, it is **suitable for all types of patients**.



Band

Likewise, an extensive choice of bands is available upon ordering. The **band plays a key role** in regards to **comfort and retention** of the device and must be designed with care. Consequently, our band designs **optimize the dental experience**, without compromising the treatment of snoring or obstructive sleep apnea.



Rod

The **unique titration mechanism** of the Panthera D-SAD uses rods made of the same biocompatible polymer as the device. The length of the rods can vary from 19 to 36 mm and can be **adjusted in 0.5-mm increments** for a highly accurate and customized advancement. Those rods are designed to **resist to bruxism** and they will never elongate. Moreover, they will **not disengage during sleep** thanks to the unique way they connect to the device. We also offer rods specifically designed for heavy bruxism.



VISIT DENTALSERVICES.NET/PANTHERA