

What the Laboratory Needs

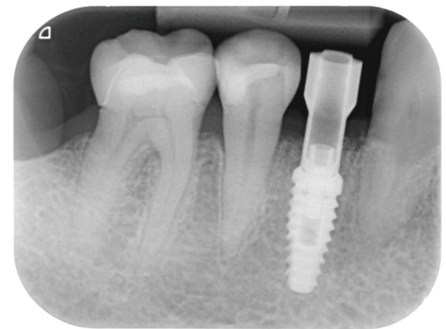
IMPLANT SCANNING PROTOCOL

The digital team at DSG has provided the following best practices to help set your practice up for success with Intraoral Scanning.

- **REQUIRED** - Preorder scan body from implant manufacturer or DSG Lab - base off implant manufacturer, type and diameter size
- Full arch scans recommended to ensure accuracy and evaluation of prosthetic principals
- Radiograph scan body in place to ensure proper seat, positioning scan body identifier/bevel notch angulation towards buccal when possible. Multiple scan bodies alternate bevel buccally and lingually.
- Select Pre-Treatment to scan image to provide detailed emergence profile data
- Take bite scan without scan body in place

PLEASE INCLUDE ON IMPLANT RX:

- Implant manufacturer
- Scan body type
- Platform size
- Custom abutment and crown material
- Cement or screw retained



Periapical radiograph confirming the seat of the scan body.



3Shape scan body positioned and screwed into position.

Images courtesy of Dr. Anthony Mak

FOR TRAINING OR CHARTING / SCANNING FOR AN IMPLANT

Contact DSG's Intraoral Scanning Support
800.511.7147 • digitalimpression@dentalservices.net